

DONOR IMPACT REPORT

BILLINGS FARM & MUSEUM



BILLINGS
FARM & MUSEUM

Fall 2024



Connecting You to Land, Food, and History

Whether you meet a newborn calf, make some butter, meet our hard-working farmers, explore our gardens, or tour our permanent and special exhibitions, **a visit to Billings Farm & Museum is an opportunity to make a connection, to inspire your creativity, or experience a moment of pure joy.**

Thanks to the continued support of our members and donors, Billings Farm & Museum remains a valued educational institution, where visitors can experience a working dairy farm and learn where our food comes from. We serve nearly 70,000 people annually, showcasing our farm's history and current operations and offering sustainable living skills you can incorporate into your everyday life.

Did You Know?

- Annual visitors to Billings Farm total nearly 70,000
- Average admission paid per visitor is \$17
- The per visitor cost to Billings Farm is more than \$80 per person!



Your Gift Makes a Difference!



Caring For Our Animals & Lands

Farm operations make up nearly one-third of our annual operating expenses. This includes the feeding and care of our animals, stewardship of our lands and equipment, and upkeep of our farm structures for the safety of guests, staff, and animals.

Support the Farm With Your Gift Today!

Supporting Our Community

Billings Farm & Museum is a community partner, donating food to the Woodstock Food Shelf and providing complimentary admission passes to service organizations for their clients, as well as to schools and nonprofits to support their fundraising events.



2024 Donations to the Community

- 75 bushels of produce
- 6 crates of apples
- 40 pounds of meat
- 450+ admissions passes
- \$7,000+ in admissions value
- 50+ benefitting organizations

Celebrating Farmers



Thanks to our donors and members, and in partnership with Vital Communities, Billings Farm hosted the *Portraits of Resilience Exhibition*, showcasing the problem-solving abilities of farmers in the Upper Valley of Vermont and New Hampshire through original artworks and educational panels.

Educating the Public

Your support helps us carry out our educational mission. Contributions underwrite engaging programming and scholarships for school and youth group field trips, farm camps, Pre-K Story Time, and homeschool classes. The education team also develops hands-on activities for daily visitors to Billings Farm and produces an annual series of skills-based workshops for adults.

Youth Programming in 2024

2,500+ Students Served

\$2,200+ Awarded in Scholarships

Nearly 1 in 5 field trip students receives scholarship support



BEYOND MEMBERSHIP

Membership is a great way to support Billings Farm, but it's not the only way to help!

Memberships offset less than 5% of Billings Farm's annual expenses

By making an additional donation beyond your annual renewal, you can make a bigger impact.

Your gift will support our education programs, farm operations, special exhibitions, and the stewardship of our lands and historic buildings.

Announcing the Frederick & Julia Billings Legacy Society

Honor the past and invest in the future of Billings Farm & Museum by joining the Frederick & Julia Billings Legacy Society.

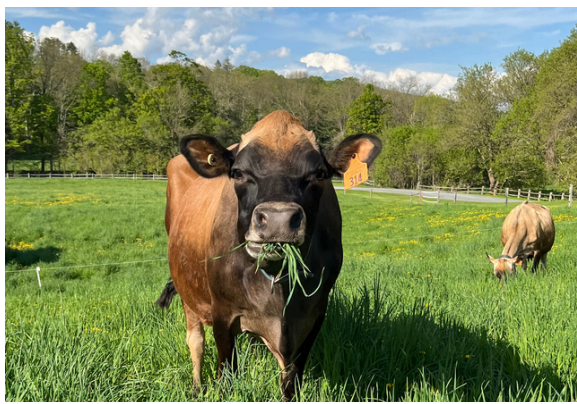
Legacy Society Members commit to including Billings Farm in their bequest or estate plan. Legacy Society gifts are vital to our mission and programs and will help sustain and strengthen the farm and museum in years to come.

Consider this opportunity to make a meaningful gift that complements your financial and philanthropic goals. Learn more at billingsfarm.org/donate.



To join the Frederick & Julia Billings Legacy Society, simply notify us that you have included Billings Farm & Museum as a beneficiary in your financial or estate plan.

Contact Jen Flaster, Manager of Advancement
(802) 457-5318 | jflaster@billingsfarm.org



WHY I GIVE TO BILLINGS FARM

"Billings Farm is an important community organization and I feel connected to the history and the Farm."

MAKE A GIFT TODAY!
BILLINGSFARM.ORG/DONATE



Ways to Give

- Use the enclosed envelope or give online at billingsfarm.org/donate
- Make a **Tribute Gift** to remember or honor someone special in your life
- Give the **Gift of Membership** to a friend or loved one
- Make your gift through a **Donor Advised Fund** or **Qualified IRA Distribution**

THANK YOU!